



Cable ID: PCF6-10CC-0100-G

Date / Time: 06/10/2019 12:27:19 PM

Headroom 7.4 dB (NEXT 36-45)

Test Limit: TIA Cat 6 Channel

Cable Type: Cat 6 F/UTP

NVP: 70.0%

Software Version: V6.1 Build 3

Limits Version: V7.1

Calibration Start Date:

Main (Module): 12/03/2018

Remote (Module): 12/03/2018

Test Summary: PASS

Model: DSX-8000

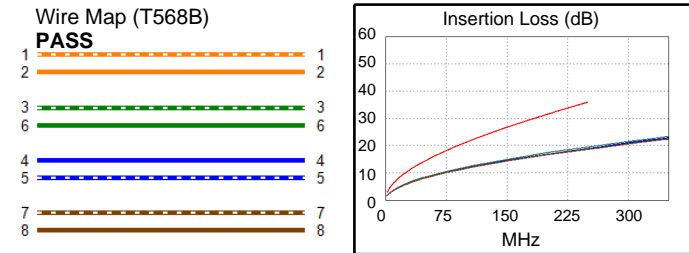
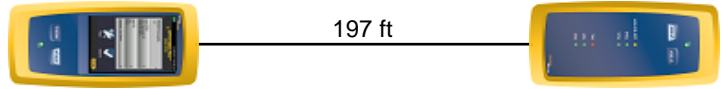
Main S/N: 1820302

Remote S/N: 1824298

Main Adapter: DSX-CHA804

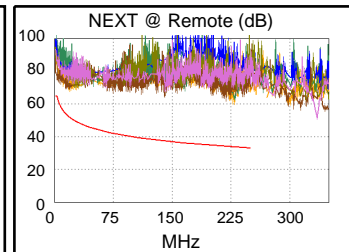
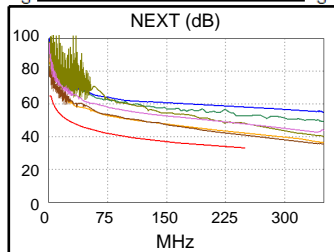
Remote Adapter: DSX-CHA804

Length (ft), Limit 328	[Pair 78]	197
Prop. Delay (ns), Limit 555	[Pair 36]	292
Delay Skew (ns), Limit 50	[Pair 36]	6
Resistance (ohms)	[Pair 36]	10.78
Insertion Loss Margin (dB)	[Pair 36]	16.5
Frequency (MHz)	[Pair 36]	250.0
Limit (dB)	[Pair 36]	35.9

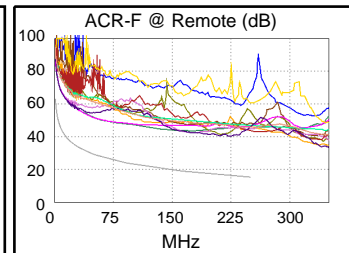
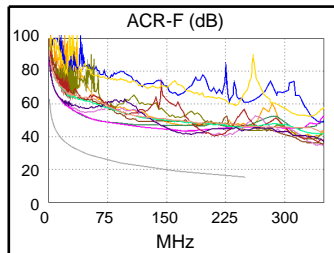


Worst Case Margin Worst Case Value

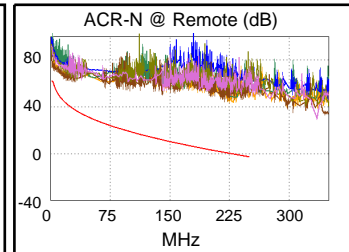
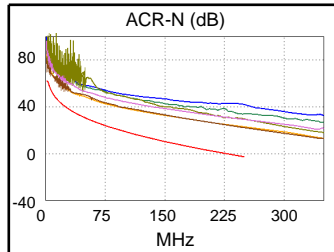
PASS	MAIN	SR	MAIN	SR
Worst Pair	36-45	36-45	36-45	12-36
NEXT (dB)	7.4	10.5	7.8	27.4
Freq. (MHz)	3.1	3.3	249.5	229.5
Limit (dB)	64.8	64.5	33.1	33.8
Worst Pair	36	36	36	12
PS NEXT (dB)	7.9	11.8	7.9	28.4
Freq. (MHz)	250.0	3.5	250.0	229.5
Limit (dB)	30.2	61.5	30.2	30.8



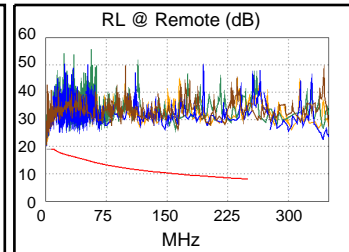
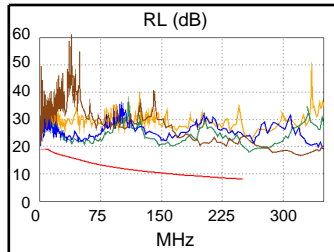
PASS	MAIN	SR	MAIN	SR
Worst Pair	12-45	78-36	36-78	78-36
ACR-F (dB)	22.2	22.1	23.9	23.3
Freq. (MHz)	47.8	20.3	223.0	223.0
Limit (dB)	29.7	37.1	16.3	16.3
Worst Pair	45	45	36	36
PS ACR-F (dB)	24.0	23.9	24.8	25.3
Freq. (MHz)	1.5	1.4	210.5	223.0
Limit (dB)	56.7	57.5	13.8	13.3



N/A	MAIN	SR	MAIN	SR
Worst Pair	36-45	36-45	36-45	12-36
ACR-N (dB)	8.9	12.0	24.9	43.1
Freq. (MHz)	3.1	3.3	249.5	229.5
Limit (dB)	61.2	60.9	-2.8	-0.4
Worst Pair	36	36	36	12
PS ACR-N (dB)	9.7	13.2	24.5	44.6
Freq. (MHz)	3.3	3.3	250.0	229.5
Limit (dB)	58.4	58.4	-5.8	-3.4



PASS	MAIN	SR	MAIN	SR
Worst Pair	36	45	36	45
RL (dB)	4.9	8.0	9.9	8.0
Freq. (MHz)	39.5	17.0	161.0	17.0
Limit (dB)	16.0	17.8	9.9	17.8



Compliant Network Standards:

10BASE-T	100BASE-TX	100BASE-T4
1000BASE-T	2.5GBASE-T	5GBASE-T
ATM-25	ATM-51	ATM-155
100VG-AnyLan	TR-4	TR-16 Active
TR-16 Passive		